



I-85 Corridor Study

Stakeholder Visioning Meeting

Tuesday, May 7, 9:30-11:30 AM

WELCOME!

AGENDA

- Workshop Purpose
- Study Overview and Process
- Stakeholder and Public Engagement
- Corridor Overview
- Station Information
- Visioning
- Summary Wrap-Up and Next Steps

WORKSHOP PURPOSE



Study Vision

This is a one- to two-sentence statement that establishes the ultimate study outcome.

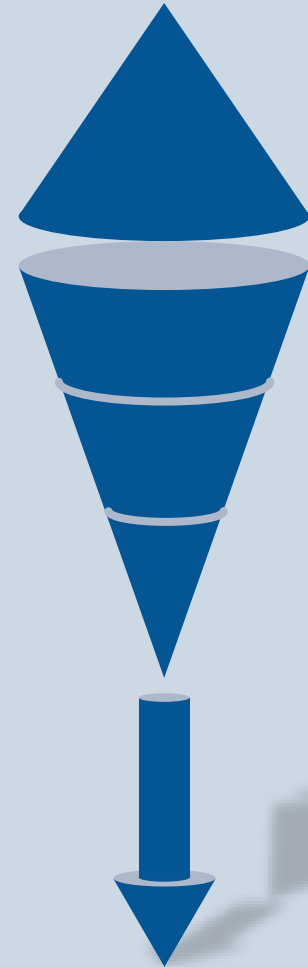


Study Goals

These are broad improvement categories that are crucial to achieving the project vision.



STUDY OVERVIEW AND PROCESS



I-85 CORRIDOR STUDY OVERVIEW



Traffic Volume

Approximately **300,000 cars** travel along the corridor each weekday.



Study Area Length

The study area encompasses approximately **20 miles** of I-85.



Interchanges

A total of **10 interchanges** are located along the study corridor.



Surrounding Communities

The study corridor is adjacent to **5 cities**.

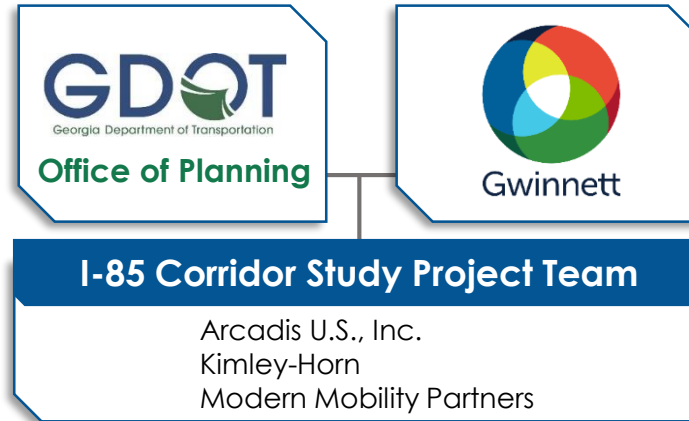


Community Improvement Districts

A total of **3 CIDs** serve the study area.



STUDY TEAM



Traffic Modeling & Operations

Planning

Conceptual Design

Data Analytics

Environmental Screening

Return on Investment

STUDY TIMELINE

Gather Data & Assess Needs



Develop Goals & Objectives



Evaluate Potential Improvements & Develop Scenarios



Analyze Scenarios & Refine Concept Design



Recommend Solutions & Develop Implementation Plan



Planning and Environmental Linkages & Stakeholder and Public Engagement

Year 1

Year 2

Year 3

STUDY SCOPE



1. Issue Identification

Identify issues associated with the study corridor.



2. Solution Development

Develop potential solutions to address the issues.



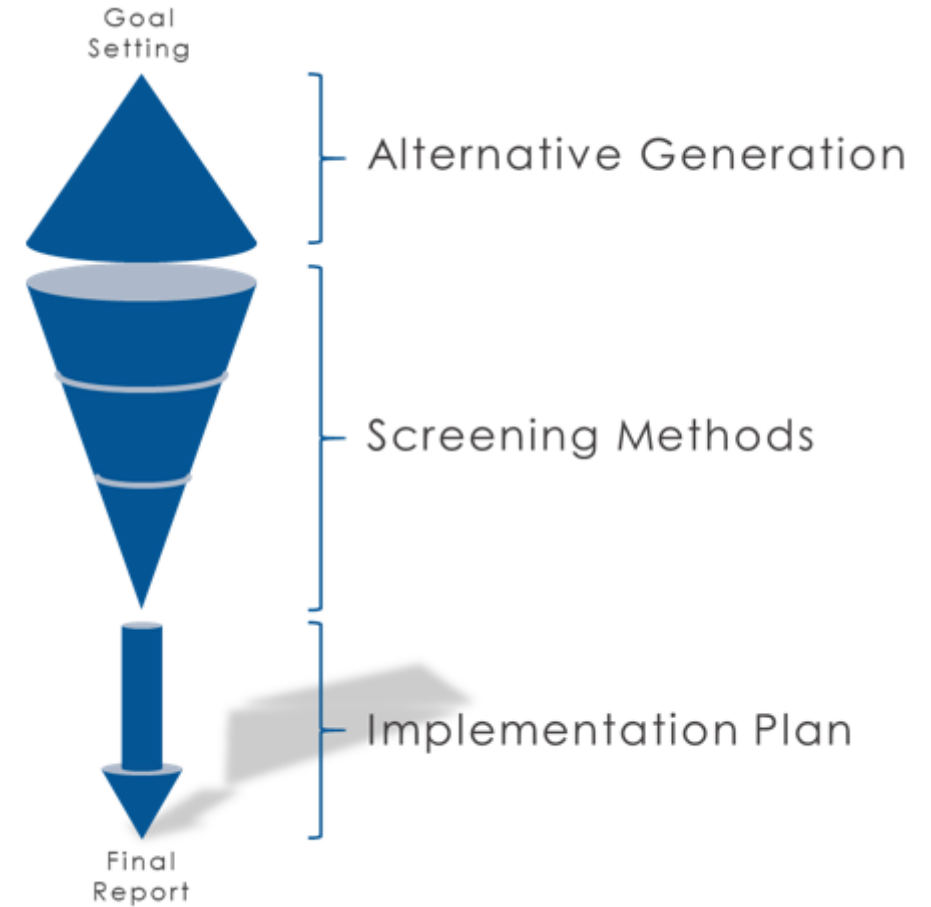
3. Evaluation

Evaluate potential solutions to select the best and most feasible solutions for recommendation.

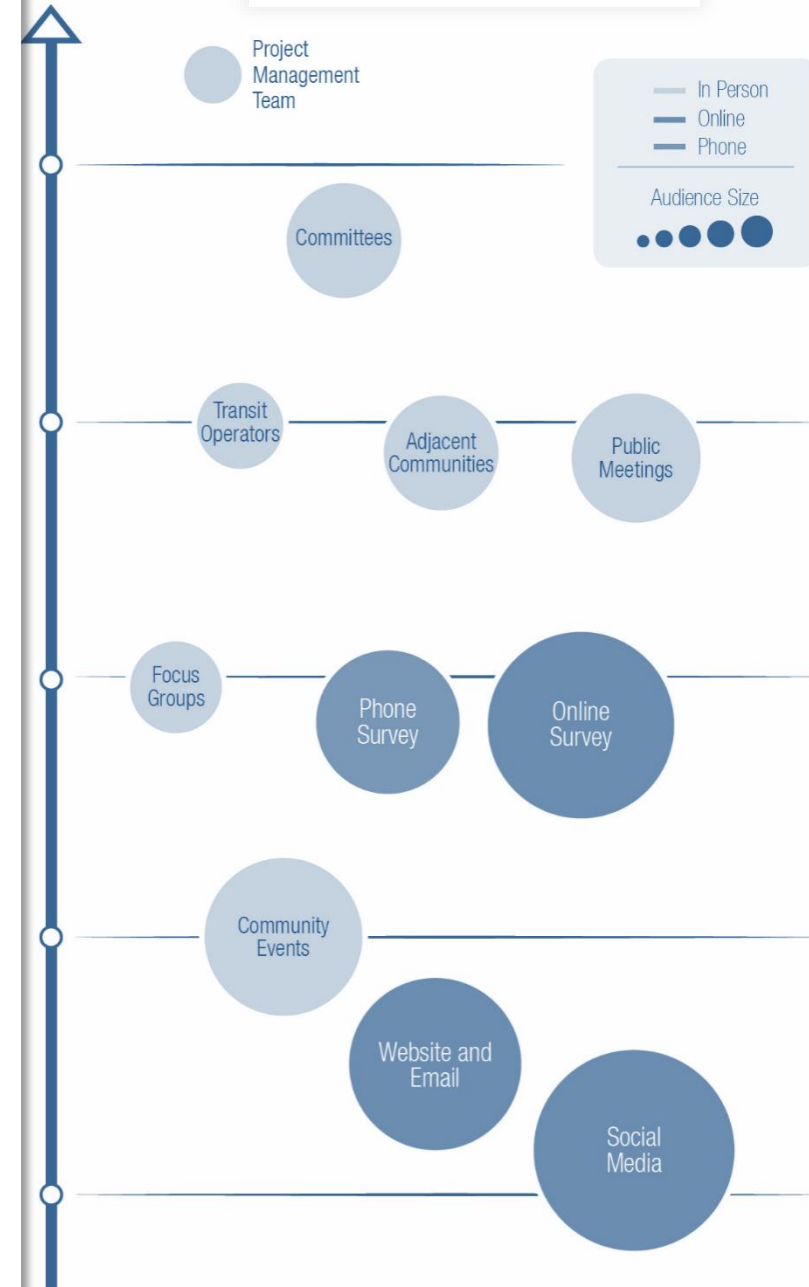


4. Implementation Resources

Develop resources for implementation to assist GDOT and GCDOT in implementing project quickly and efficiently.



STAKEHOLDER/ PUBLIC ENGAGEMENT



WHO IS INVOLVED



COMMUNITY ENGAGEMENT



PUBLIC MEETINGS



OPEN HOUSES



COMMUNITY EVENTS



COLLATERAL

WEBSITE



EMAIL



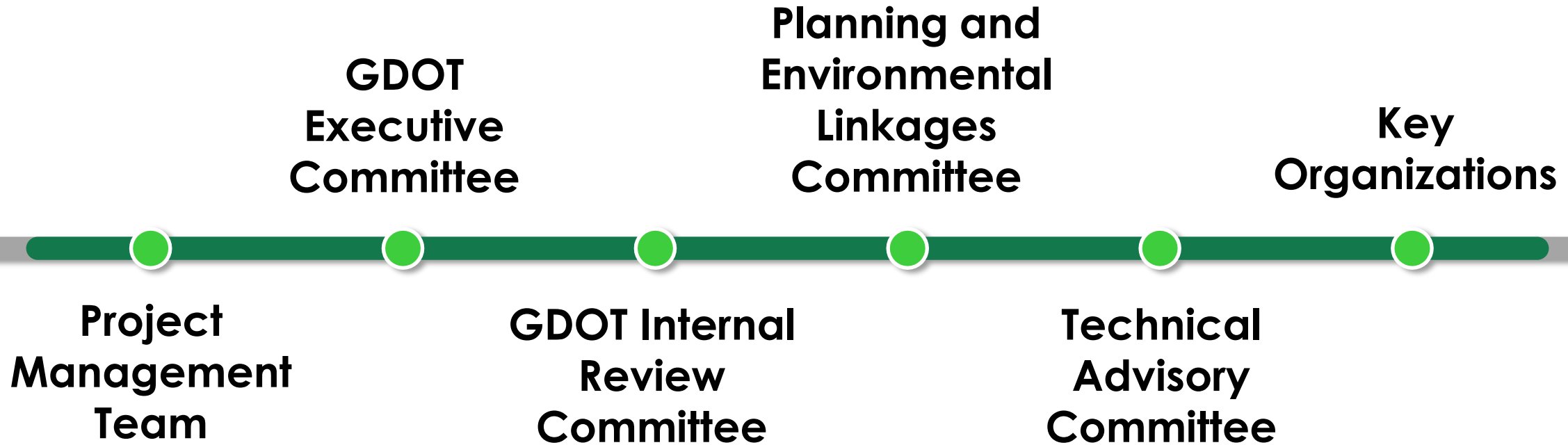
ONLINE SURVEYS



SOCIAL MEDIA



STAKEHOLDER GROUPS



STAKEHOLDER RESPONSIBILITIES



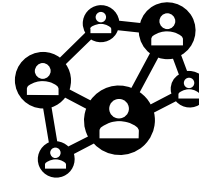
Participate in Vision and Goals development



Help identify and advertise public involvement opportunities



Attend committee and small group meetings



Attend public meetings



Review documents and recommendations

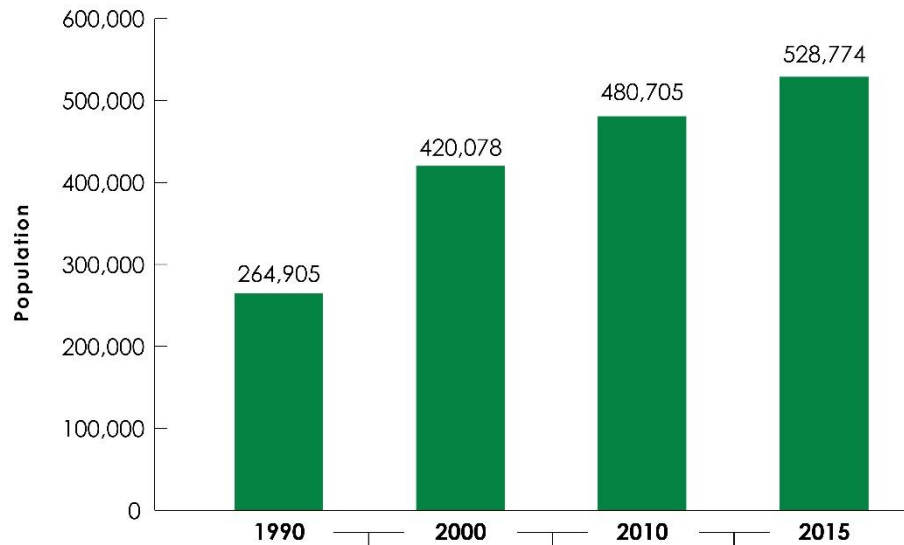
CORRIDOR OVERVIEW



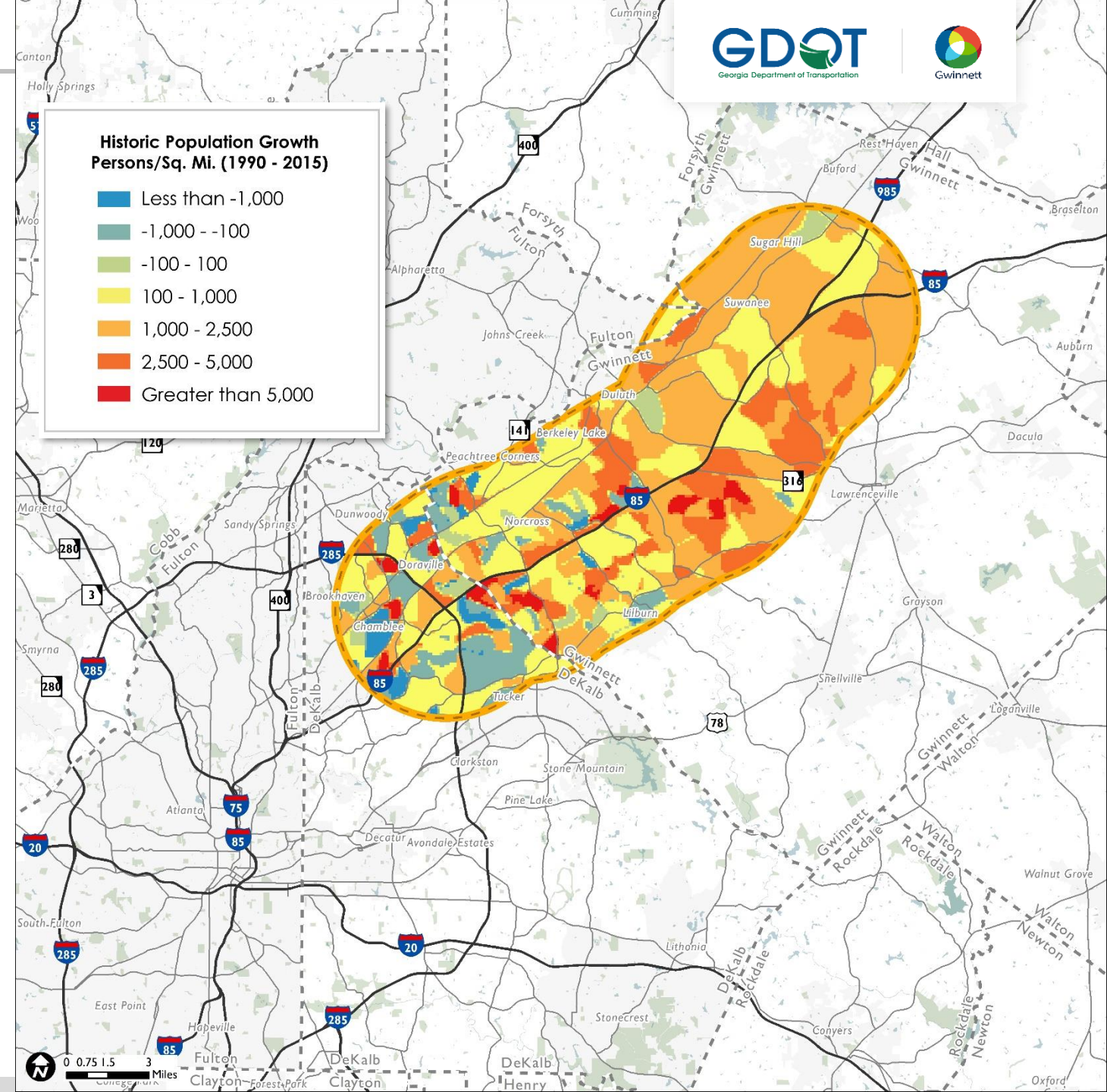
CORRIDOR HISTORY

HISTORIC POPULATION GROWTH

Subarea Population

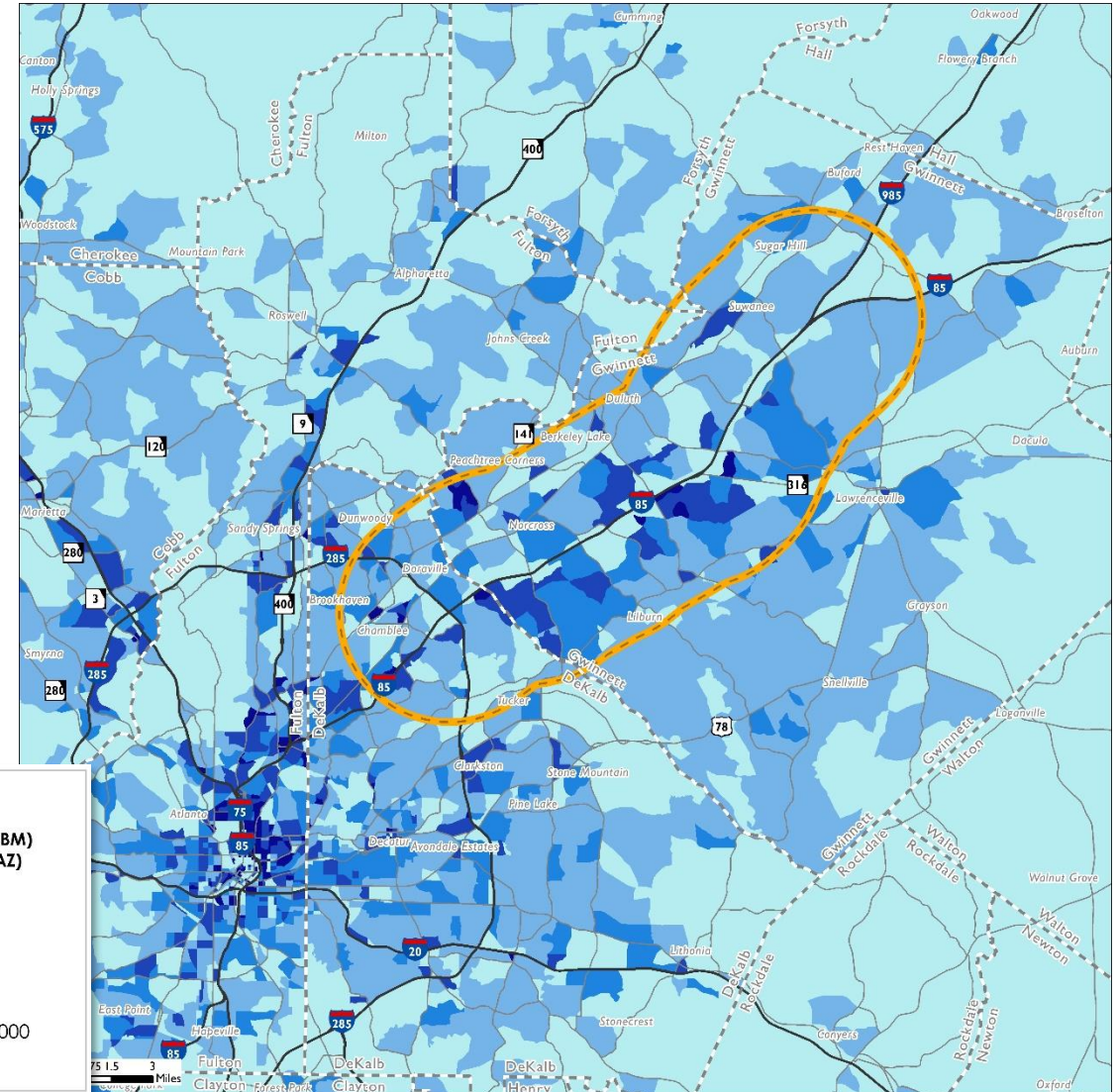
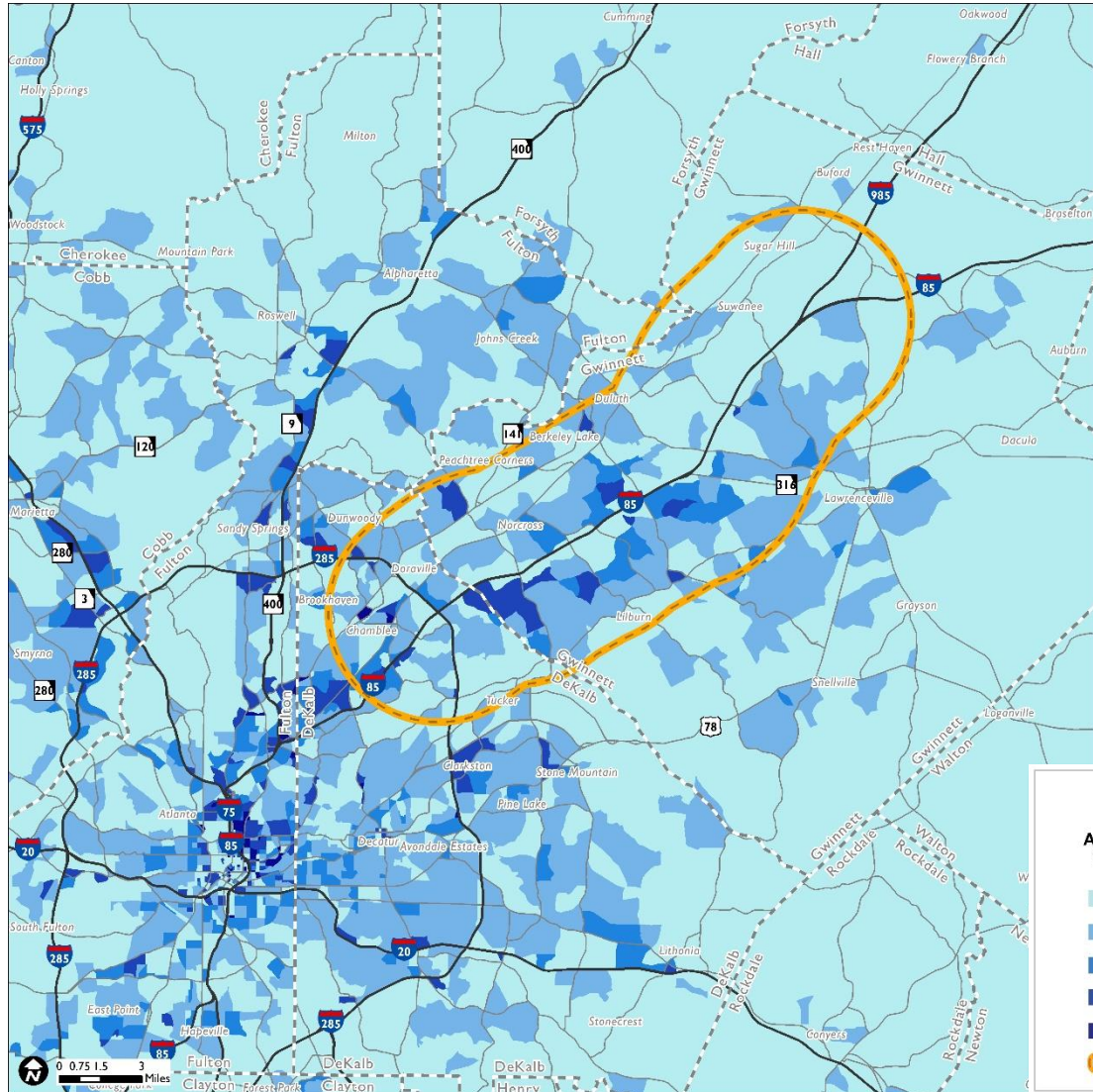


Percent Growth



POPULATION DENSITY 2015

POPULATION DENSITY 2040



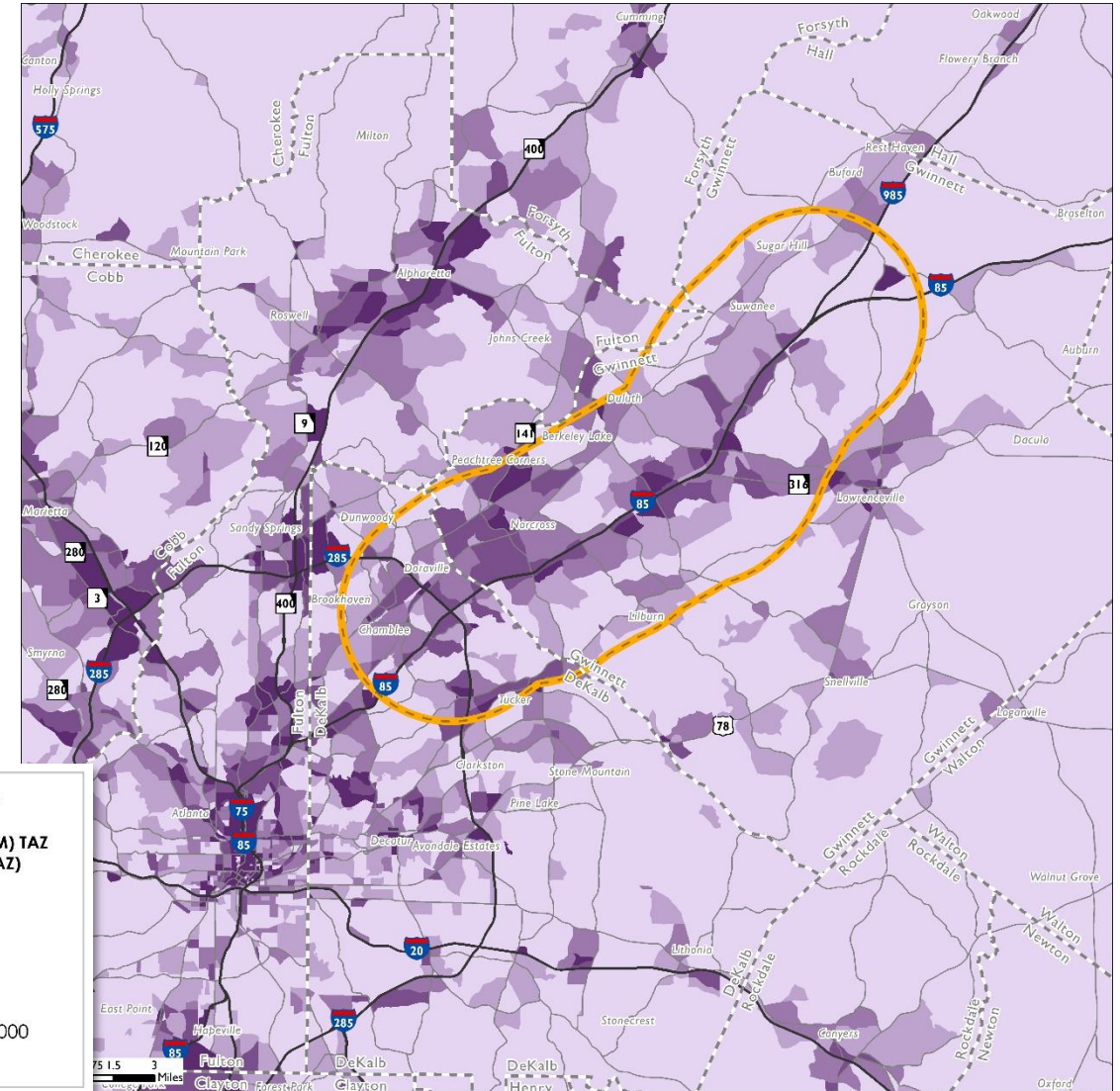
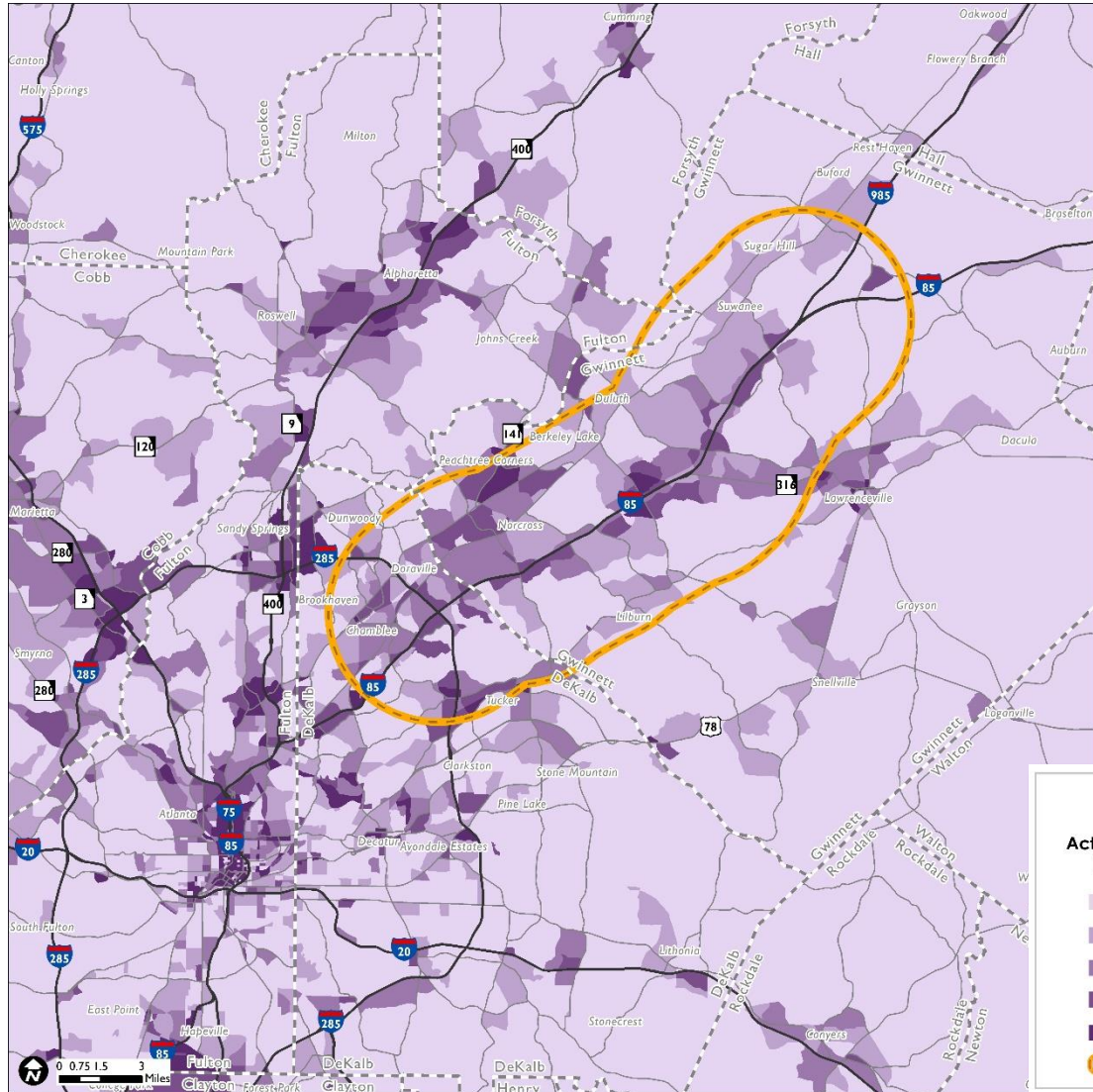
Population Density
(Persons/Sq. Mi.)

Activity-Based Model (ABM)
Traffic Analysis Zone (TAZ)

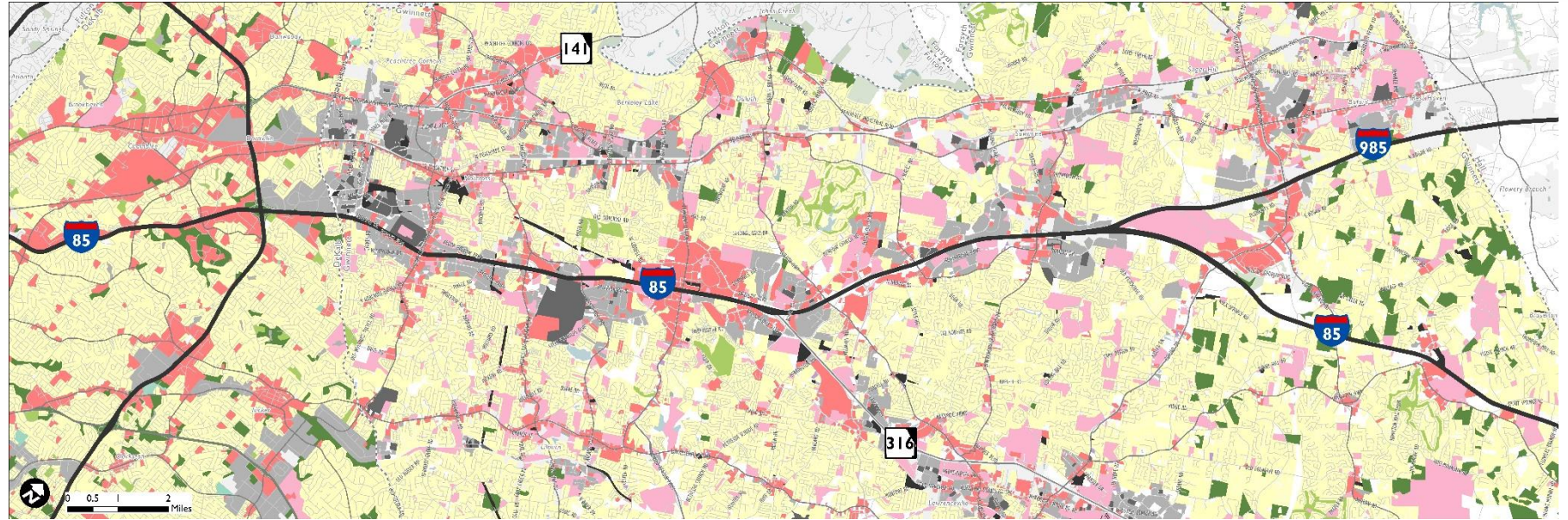
- Less than 2,500
- 2,501 - 5,000
- 5,001 - 7,500
- 7,501 - 15,000
- Greater than 15,000
- Study Area

EMPLOYMENT DENSITY 2015

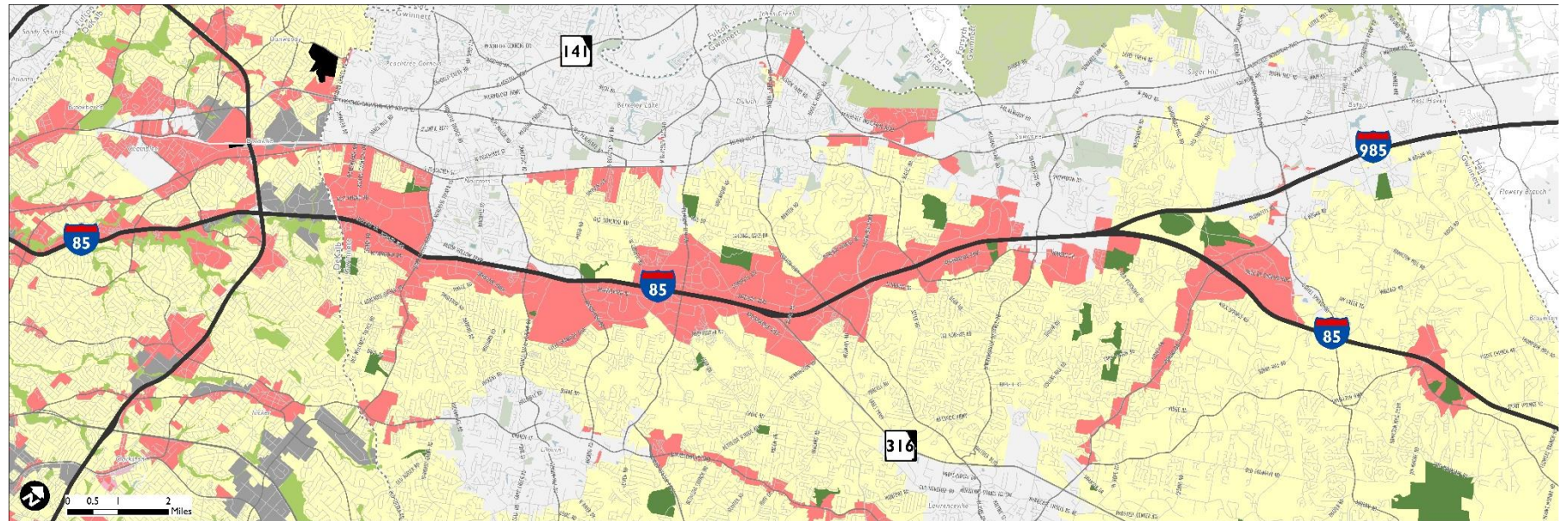
EMPLOYMENT DENSITY 2040



EXISTING LAND USE

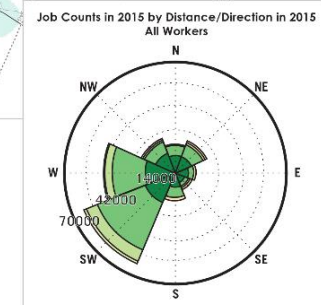
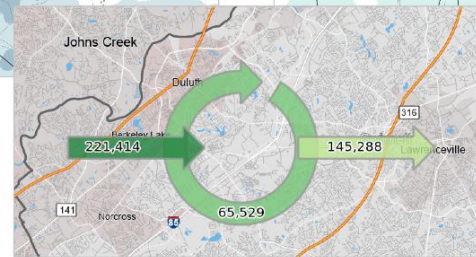
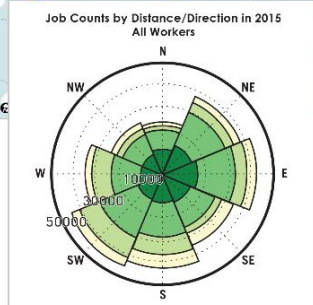
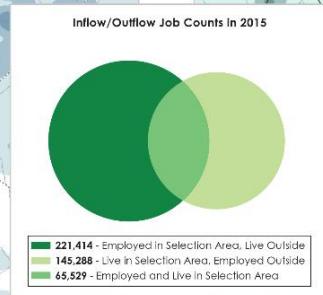
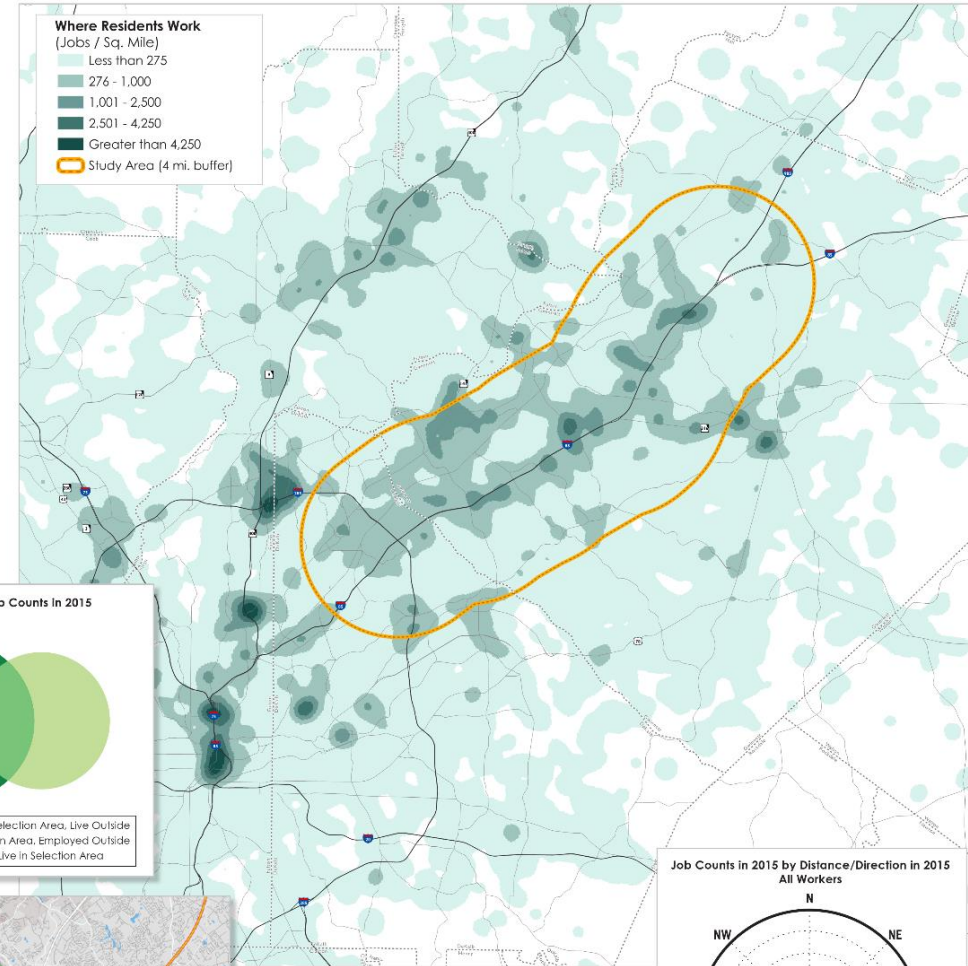
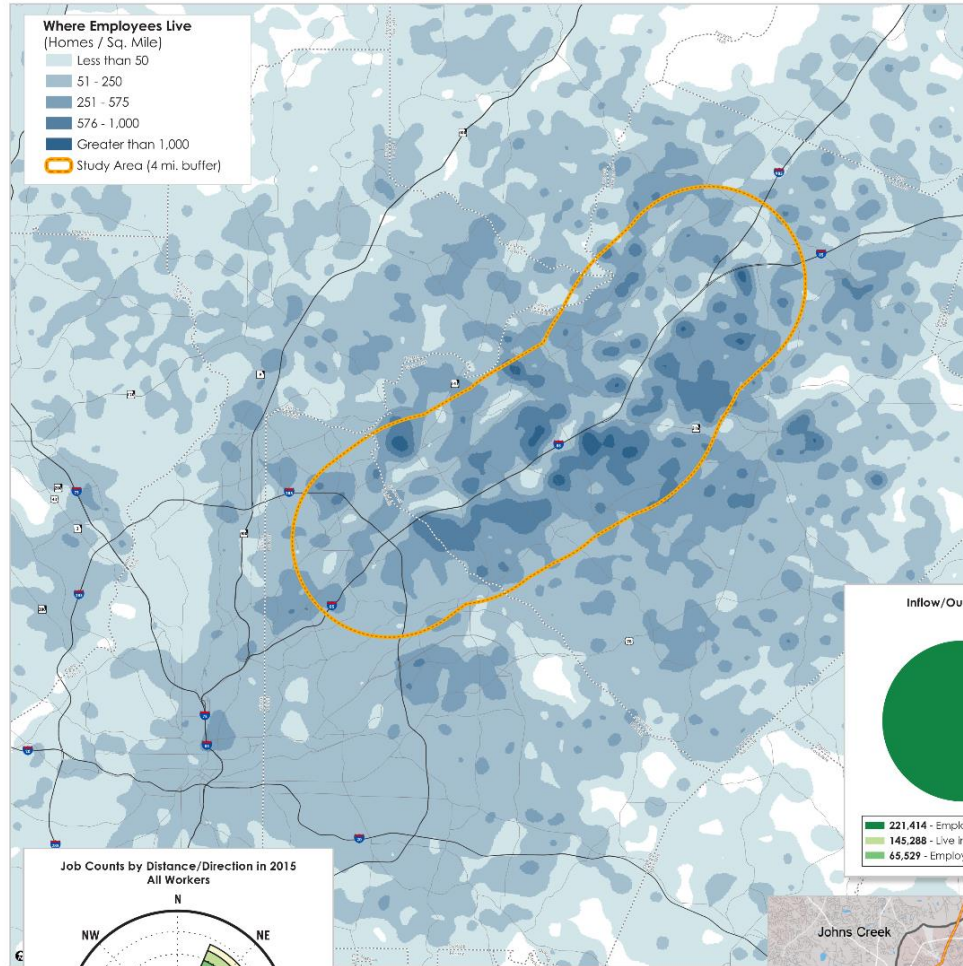


FUTURE LAND USE



Where Employees Live

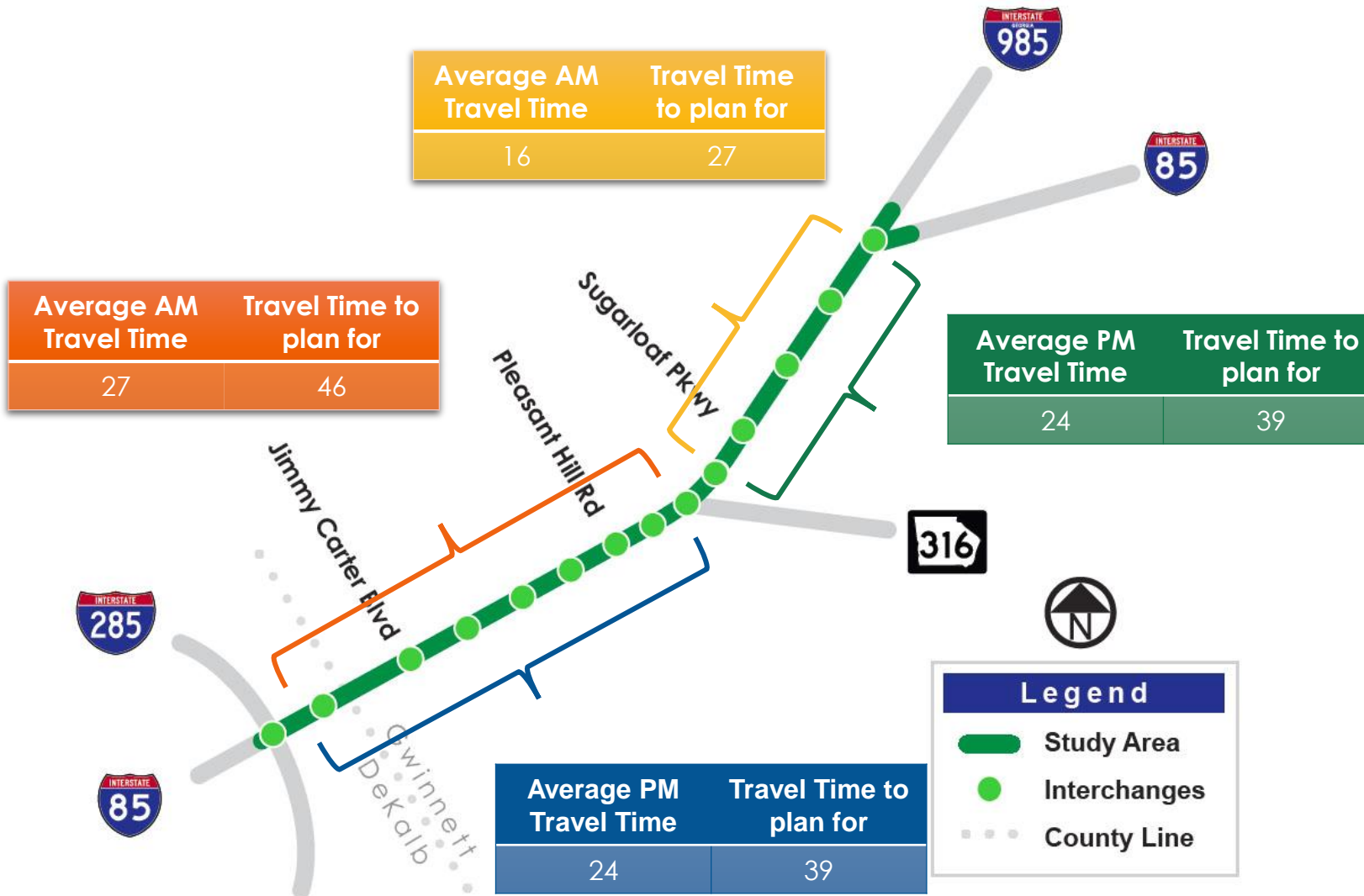
Where Residents Work



Source:
OnTheMap - U.S. Census Bureau,
Center for Economic Studies

Data based on 2002-2015 Longitudinal Employer-Household Dynamics (LEHD) Origin-Destination Employment Statistics (LODES)

TRAFFIC CONDITIONS: TRAVEL TIME



During the AM and PM peak periods, non-recurring congestion causes large swings in travel time in the peak directions.

STATION INFORMATION



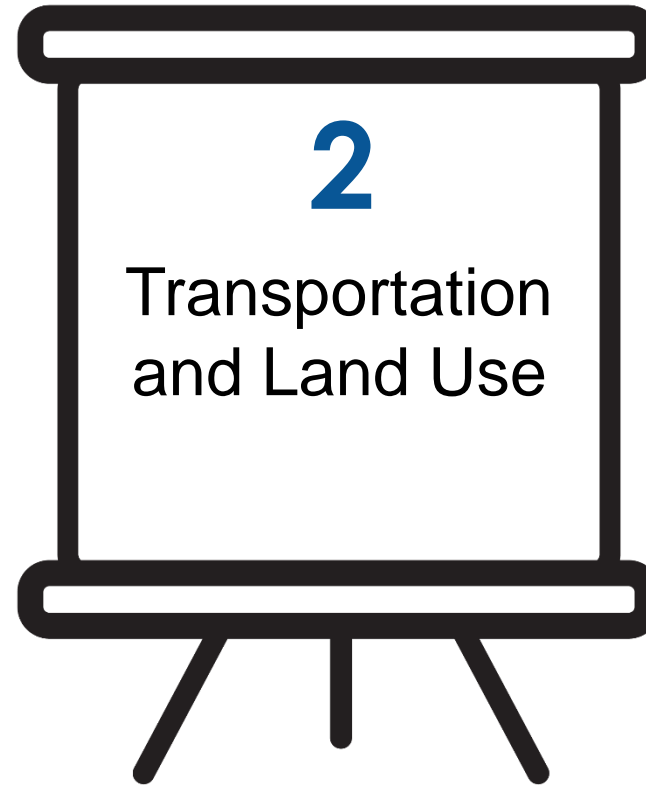
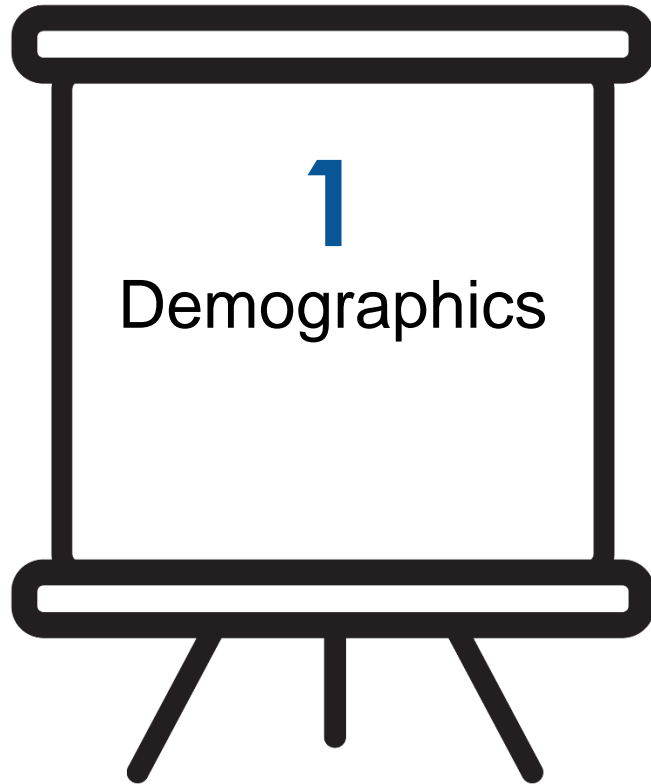
STATION INFORMATION

- Stakeholder recommendations
- Community event recommendations
- General comments/requests

VISIONING



INFORMATIONAL BOARDS



VISIONING EXERCISE – PURPOSE

- Explore most important goals and considerations for the corridor study
- Allow for all voices to be heard
- Provide an environment for a cross-pollination of ideas



VISIONING EXERCISE – LOGISTICS

- 3 questions, 3 rotations
 - Write/draw your thoughts!
- Table host responsibilities:
 - Remain at the table
 - Summarize previous conversations
 - Facilitate discussion
- Others rotate to new tables with new people

Question 1:

**Think about the I-85 corridor today.
What are some of the things that come
to mind when you think about it?**

*(Consider both areas of strength and areas for
improvement)*

Question 2:

**Now think about the future (2050).
When you envision your optimal I-85
corridor, what are the things you see?
*(Keep this high-level)***

Question 3:

What are some of the barriers or obstacles to seeing that optimal corridor come to fruition?

SUMMARY OF TABLE RESULTS

- Top Five Goals by Table
- Brief Summary
- Dots Exercise
 - Orange dots for Short-Range needs
 - Blue dots for Long-Range needs

MEETING WRAP-UP AND NEXT STEPS